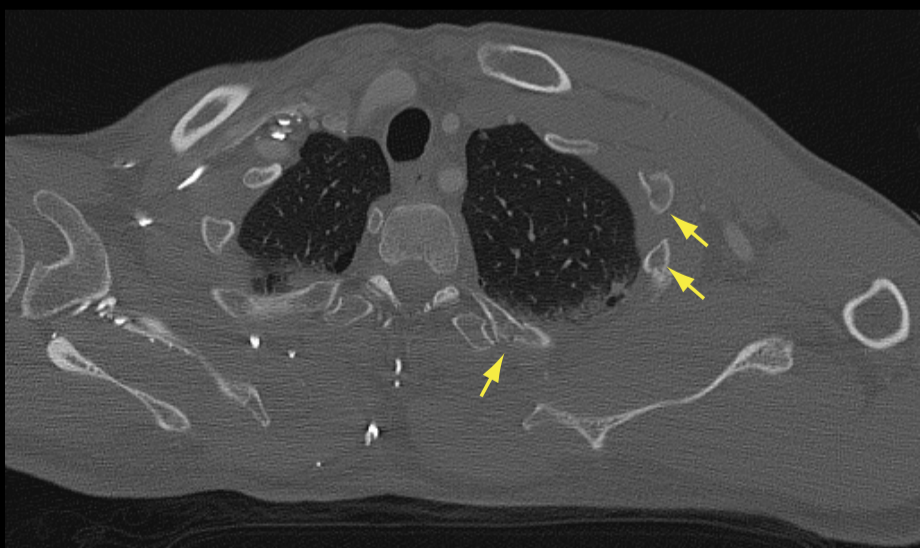
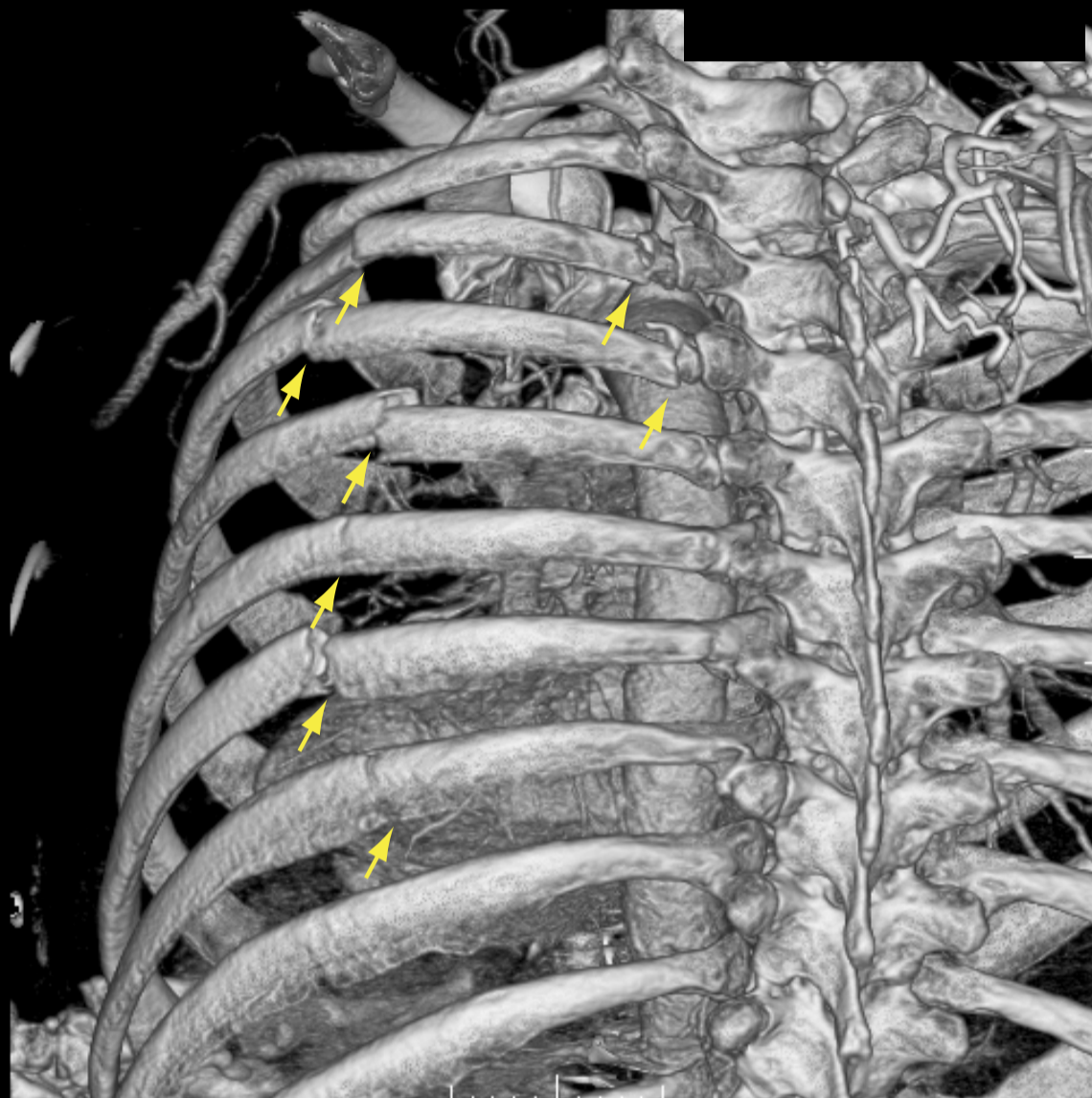


Radiographs of a 36 year old scaffolder who fell from a height of 4 metres onto concrete below. Axial CTs demonstrate a posterior flail segment between lateral and posterior fractures (arrowed). This is well seen on the volume rendered image (immediately below) in which the scapula has been omitted



Axial CTs demonstrating a posterior flail segment between lateral and posterior fractures (arrowed).